

SHMOnline Meter Bureau Service

Summary

A flexible, low cost remote meter reading service, suitable for billing meters.

- ◆ Reads meters using wireless connection to the internet.
- ◆ Reads electricity, water or gas meters.
- ◆ The readings can then be viewed through the internet at any time.
- ◆ The readings are presented as tables, graphs, or as emails which can be sent from the service to a specified email account.
- ◆ Security ensures that a customer can see only their own data.
- ◆ Bills can be sent via email to the customer.

Features

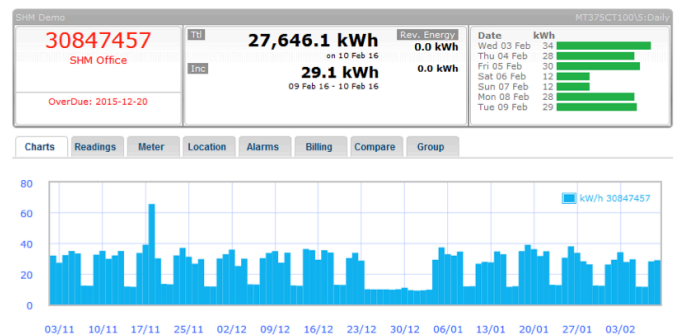
The service can be 1/2 hourly, daily, weekly or monthly. The sample screens shown are from a daily service.

You can see:

- ◆ Most recent reading.
- ◆ Three month view as graph.
- ◆ Multi-tariff – day/night.
- ◆ Readings as a table – can be saved as a CSV file.
- ◆ Meter readings can be sent as email – customer defines the email addresses.
- ◆ Energy consumption analysis for comparisons for two periods – day to day, week to week, month to month, year to year.
- ◆ Billing (which can be automated).

Sample screens

Meter consumption and the last three months history.



Readings as a table



Start Date	Reading	Incremental Value	kWh	End Date	End Rdg
09-02-16	27617		29.10	10-02-16	27646.1
08-02-16	27588.7		28.30	09-02-16	27617
07-02-16	27577.14		11.56	08-02-16	27588.7
06-02-16	27565.42		11.72	07-02-16	27577.14
05-02-16	27535.76		29.66	06-02-16	27565.42
04-02-16	27507.92		27.84	05-02-16	27535.76

Configure bills (only with the admin password)



The screenshot shows the 'Billing/Statements' configuration page. It includes fields for Consumer (SHM Communications Ltd), Location (SHM Office), Meter (30847457), Next Bill Date (01 Mar 2016), and Last Bill Date (01 Feb 2016). There is a 'Create a Bill' button. Below this is a 'Billing History' section showing 'View bills for: 30847457' and 'All meters in this group'. The 'Automatic Billing' section shows 'Billing Frequency: Monthly'. A 'Manage Your Billing' dialog box is open, showing 'Create Interim Statement' with 'Last Bill To Date: 01 Feb 16' and 'Next Bill Date: 01 Mar 2016'. It has a field for 'Enter Admin Charge for this bill:' set to 1.00 and a 'Select date for Interim Statement' dropdown set to 2016-02-10 01:23:42. A 'Create Bill' button is at the bottom of the dialog.

Setting up automatic reports

Settings - CSV Data Reports



The screenshot shows the 'Settings - CSV Data Reports' configuration page. It has a field for 'Email CSV report to:' with two email addresses: @shmmcomms.co.uk and @sidrat.co.uk. Below this is a 'CSV Data Frequency:' dropdown menu set to 'Daily'. A note states: 'Note: Weekly reports are created on Mondays and monthly reports are created on the 1st of the month.'

Analysis

Analysis allows you to compare consumption over time, and importantly, you can scale it to kg of CO₂, or £ to make the values more accessible to the layman. See the following sample analysis screen.

Energy Consumption Analysis

Compare readings from with readings from

Select Units/Interval Units/Hr Units/Day

Meter: **K09D00521** Location: **PV001** Meter Type: **Electricity** Service: **Monthly**

Comparison in Units/Hr

Last Month

Current 4.9 ↓ -39.7%
Previous 8.2 ↓ -3.2 kWh/Hr

Last Quarter

Current 7.7 ↔ * 0%
Previous ↔ * 0%

Last Year

Current 2.9 ↔ * 0%
Previous ↔ * 0%

From - To	Period	% Change	Units Used	Avg kWh/Hr	Cost T1	Cost T2	Cost Ttl	KgCO2
Sun 01 Sep 13 - Tue 01 Oct 13	Month	↓ -39.7	3545	4.9	£0.00	£0.00	£0.00	1,773
Thu 01 Aug 13 - Sun 01 Sep 13			5875	8.2	£0.00	£0.00	£0.00	2,938
Value of Reduction							-£0.00	-1,165
Mon 01 Jul 13 - Tue 01 Oct 13	Quarter	↑ N/A	16973	7.7	£0.00	£0.00	£0.00	8,487
N/A - Mon 01 Jul 13								
Value of Reduction							-£0.00	8,487
- Tue 01 Oct 13	Year	↑ N/A	25362	2.9	£0.00	£0.00	£0.00	12,681
N/A - N/A								
Value of Reduction							-£0.00	12,681

Click [here](#) to email us your comments on this feature.

Tariff1 = £0.100/unit Tariff2 = £0.060/unit kgCO2 = 0.500/unit

Calculations

You can set CO2 and £ values for reports

Supported Meters

A range of single and three phase meters can be used, and either Direct connected, or CT connected. All are suitable for billing (MID approved). The meters below are supported at the time of writing, but contact SHM for latest information.

SHM Code	SHM Website	Description
ME372	ISKRA ME372	100A single phase
EDMIMK7CP	EDMI Mk7	100A single phase
MT375SMSDC	ISKRA 375	Direct connect 3phase
MT382DC	MT382DC	Direct connect 3phase
EDMIMK10ADC	EDMI Mk10	Direct connect 3phase
MT375SMSCT	ISKRA 375	CT connect 3phase
MT382CT	MT382CT	CT connect 3phase
EDMIMK10ACT	EDMI Mk10	CT connect 3phase

For gas and water meters, we use the ISKRA P2G battery powered data logger. Please call SHM for details.

Demo

To trial the system, go to www.shmmetering.co.uk and click on 'Systems, SHMOnline'. There you will see login and password to access a live meter. The owner of the meter can set up the properties of the meter, set-up reports and billings, and check the account status.

Order specifications

SHM Stock Code	Description
SHMOPR	Daily read 1/2 hour profile for renewables and billing
SHMOD	One reading per day, midnight or shortly after
SHMOW	One reading per week, at the end of the week
SHMOM	One reading per month, at the end of the month